

Portfolio

Aidan Cheung  
San Francisco State University  
Graduating Spring 2025

# Aidan Cheung

(415) 770 - 2160

aicheung110@gmail.com

Hi, my name is Aidan Cheung, and I am an interior design student at San Francisco State University. Born and raised in San Francisco, my love for design has roots that go back to my childhood. I grew up playing with LEGO and Minecraft, which were my first introductions to the world of spatial planning and creativity. Building intricate structures with LEGO taught me about balance, structure, and the importance of detail, while Minecraft opened my mind to the limitless possibilities of design in a virtual world. These experiences sparked my fascination with creating spaces and environments, and they laid the foundation for my passion in interior design.

Beyond design, I have a unique hobby of cleaning and auto detailing, which has taught me the value of precision, attention to detail, and maintaining the beauty of both small and large spaces. I find satisfaction in transforming a cluttered environment into something pristine and well-organized, and this passion naturally extends to my work in interior design. I believe that creating spaces that are both aesthetically pleasing and well-maintained is key to enhancing the overall experience and functionality of any space.

My design philosophy has been deeply influenced by minimalism and Japanese design, with a strong emphasis on function and practicality. I believe that a well-designed space should be not only beautiful but also practical, where every element serves a purpose. Japanese design, with its clean lines, uncluttered spaces, and focus on harmony between function and form, has had a profound impact on my work.

Statement

Resume

Education

Bachelor of Science in Interior Design & Architecture  
San Francisco State University  
Expected Graduation - Spring, 2025  
Honors - Dean’s List

Involvement

American Society of Interior Designers - Member

Exhibition

37th Stillwell Student Exhibition - Plastic Landscapes

Experience

Auto Detailer  
Present - 2022

- Utilize professional detailing techniques to restore and rejuvenate vehicle exteriors and interiors
- Adept with machine polishing and paint protective coating application to enhance the appearance of paint

Automotive Fellowship - Intern  
San Francisco Unified School District, 2020

- Identified components of an internal combustion engine
- Troubleshoot mechanical issues within vehicle
- Completed 4 certificate programs on automotive safety and knowledge

Software



AutoCAD



SketchUp



D5 Render



Photoshop



Illustrator



InDesign



After Effects





Contents

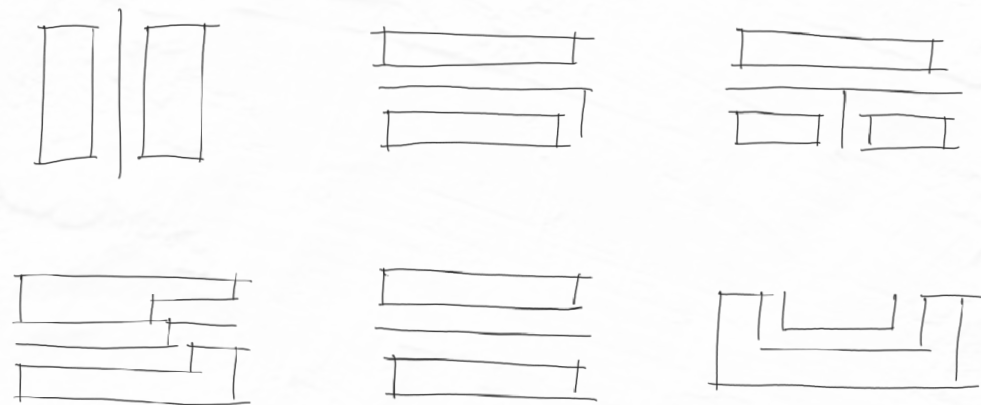
Veil

Hwa

Mizu







Concept Sketches - A Study Of Public And Private Zoning

## 01 Veil

Fall 2024

Veil - something that partially obscures or separates, representing the separation of spaces and privacy, with a hint of mystery and seclusion.

This project reinterprets modern minimalism by using the concept of a veil to separate spaces. Inspired by Japanese design, it blends contemporary aesthetics with practical functionality, balancing openness and seclusion within the 3,000-square-foot house, creating a harmonious blend of privacy and connection.

### Location

Arcadia, California, is a vibrant city located in the western San Gabriel Valley, just 13 miles northeast of downtown Los Angeles. Known as the “City of Homes,” Arcadia offers a blend of suburban charm and natural beauty, with tree-lined streets, well-maintained neighborhoods, and a strong sense of community.

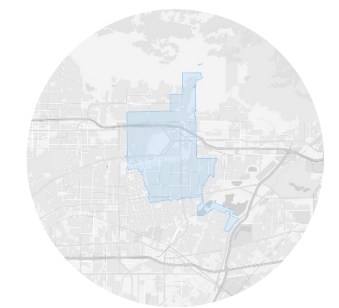
The city experiences a mild Mediterranean climate with warm, dry summers and cool, wet winters. Arcadia enjoys mild weather throughout the year, making it a pleasant place to live or visit. Summers can be hot but are typically dry, and winters are cool but rarely cold.



Map of California



Map of Los Angeles



Map of Arcadia



Exterior

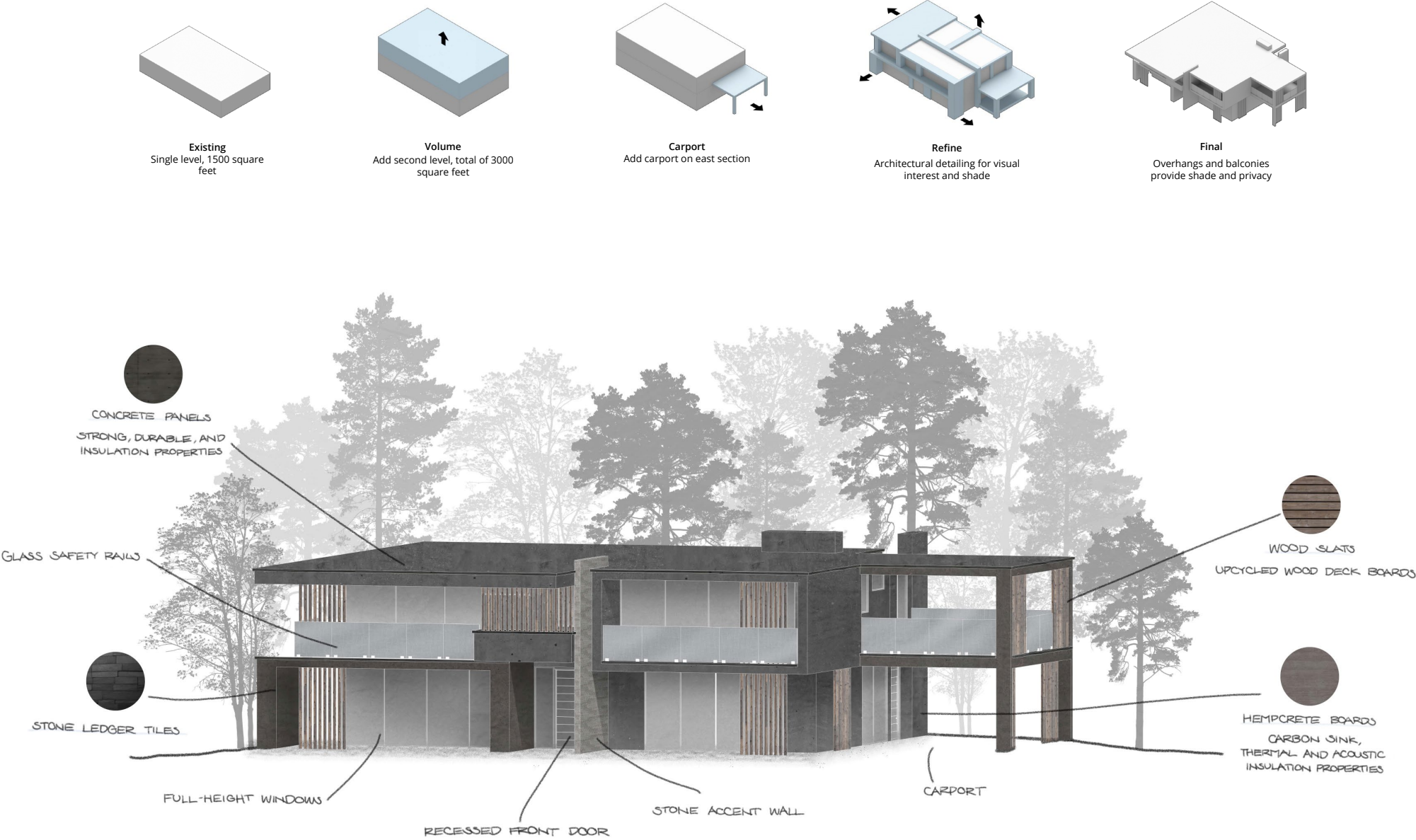
To capitalize on the region’s mild climate, full-height windows span the building’s facade, flooding the interior with natural light from every side. These openings also promote passive solar design, enhancing energy efficiency.

In response to the hot, dry climate, balconies and overhangs offer shade, privacy, and usable outdoor spaces. Every upper-level room features a balcony, including a unique one above the carport, providing a sense of connection to the outdoors.

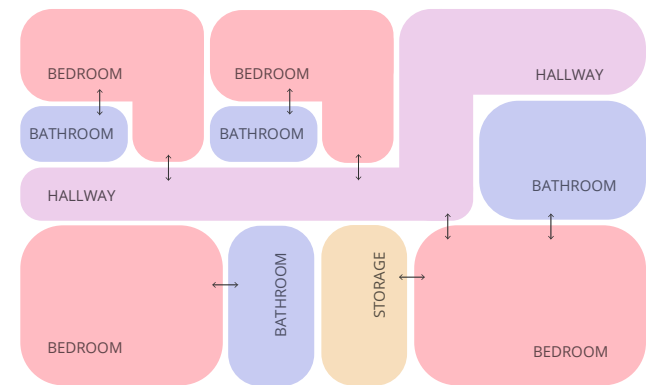
Wood slats, inspired by traditional Japanese architecture, are used throughout the exterior. Made from upcycled deck boards, they offer both a weathered patina and sustainability, combining durability with eco-conscious design.

Hempcrete boards line the exterior walls for their low carbon impact and excellent insulation properties, further contributing to the home’s sustainability.

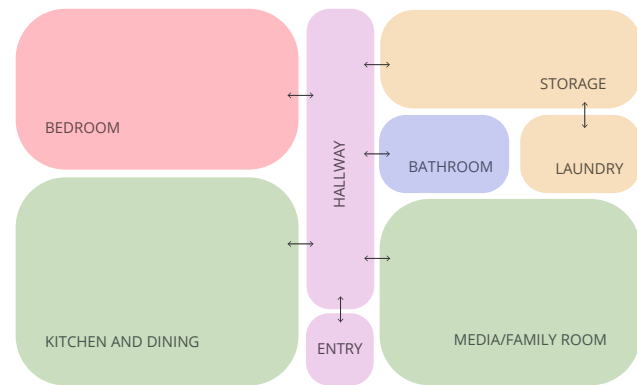
Other materials and design features provide layers of privacy and climate responsiveness, ensuring both comfort and aesthetic harmony in Arcadia.



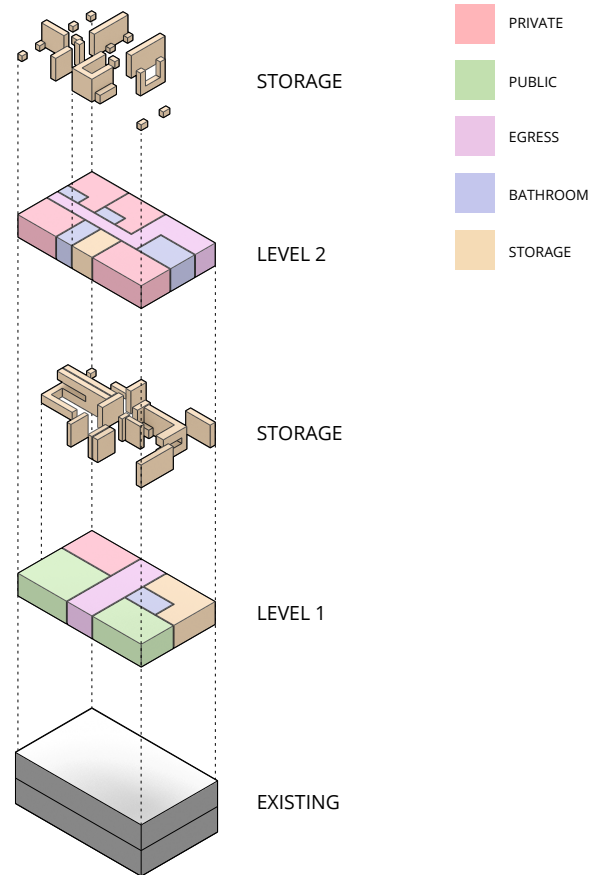




Level 2



Level 1

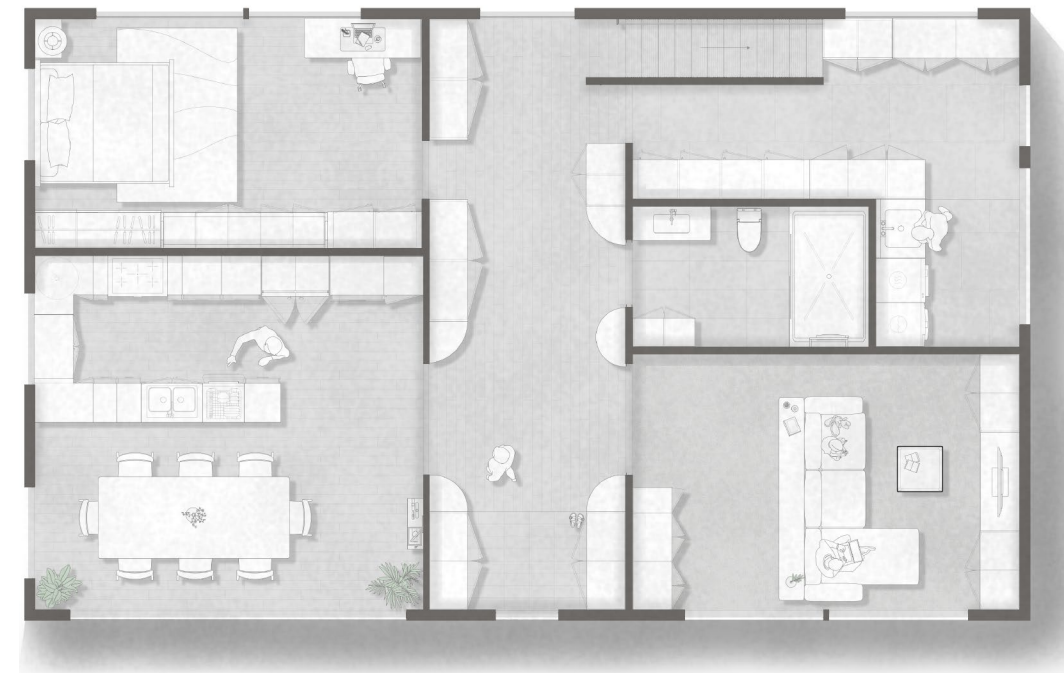


## Zoning

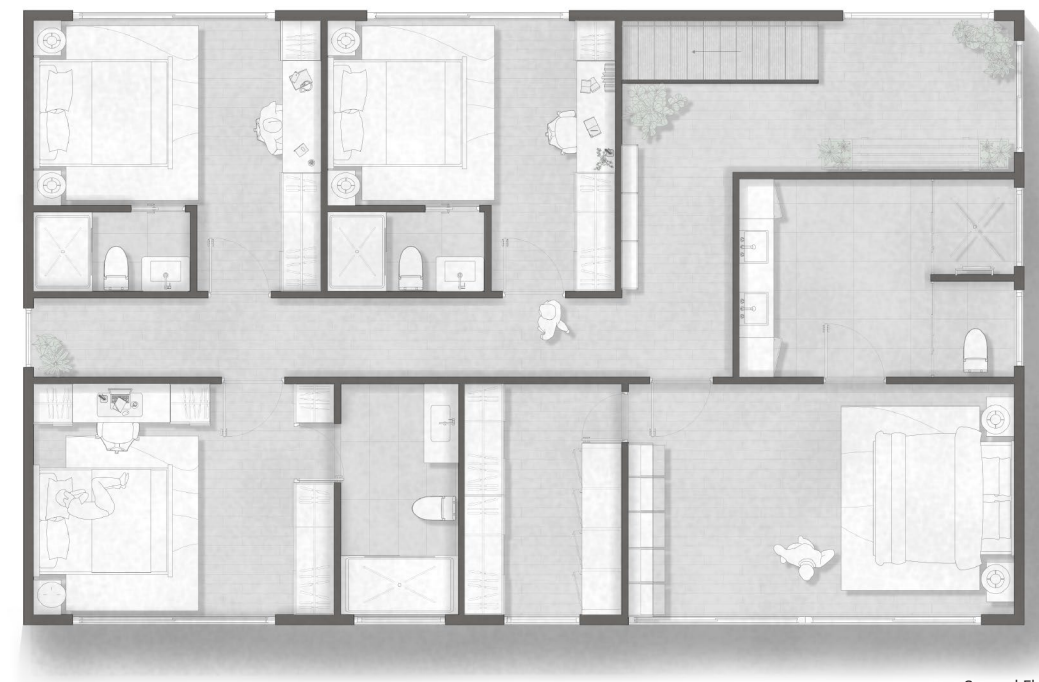
Building on the concept sketches, the space division is inspired by Japanese principles of spatial organization. In contrast to the open-concept layouts common in modern homes, each room is carefully zoned to ensure privacy, isolating them from noise, odors, and temperature fluctuations from other areas.

## Storage

Less is more—except when it comes to storage. The design incorporates abundant storage to accommodate for personal belongings. Each room is equipped with ample storage tailored to its function, along with dedicated spaces for miscellaneous items, ensuring everything has its place.



First Floor



Second Floor









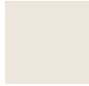



**Interior**

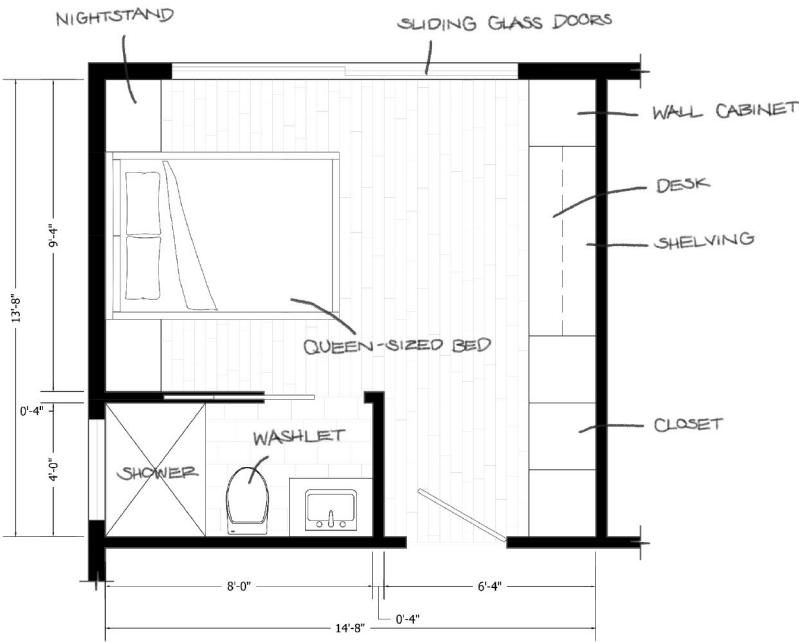
Simplicity is key—focusing on the essentials. Like the exterior, the interior is inspired by Japanese design, where every element serves both form and function.

Full-height doors, windows, and cabinets contribute to a sense of openness, making the space feel more expansive. To emphasize the expansive windows, a neutral color palette is paired with a selection of materials that offer rich textures, creating a tactile and visual experience that is enhanced by natural light.

Sliding glass and pocket doors, echoing traditional Japanese shoji screens, provide a modern twist on classic design, further enhancing the home's sense of fluidity and connection to its surroundings.

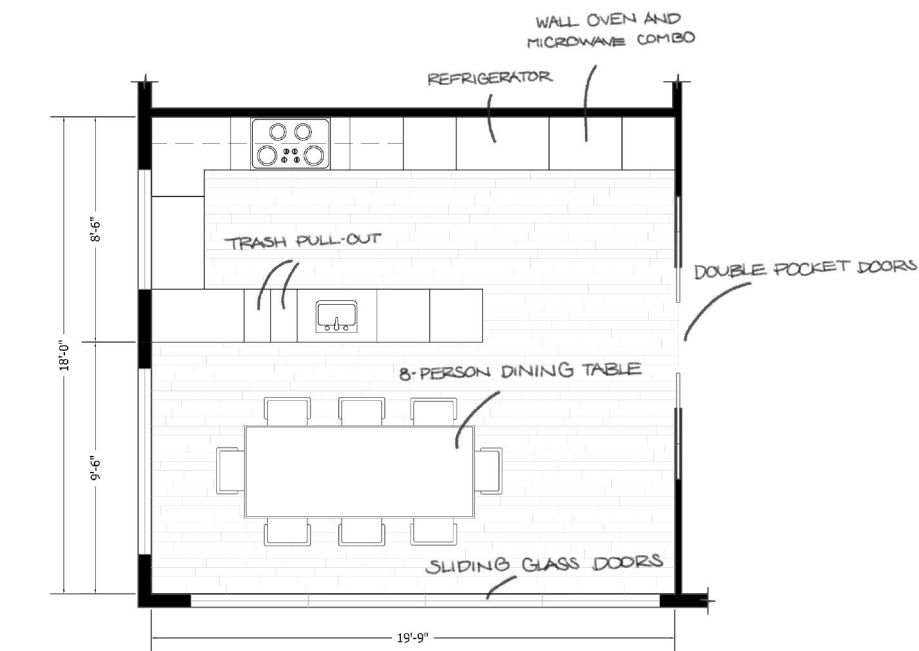
| Color Palette   | Materials   |
|---|---|
|  |  |
|  |  |
|  |  |
|  |  |
|  |  |

**Bedroom Plan**

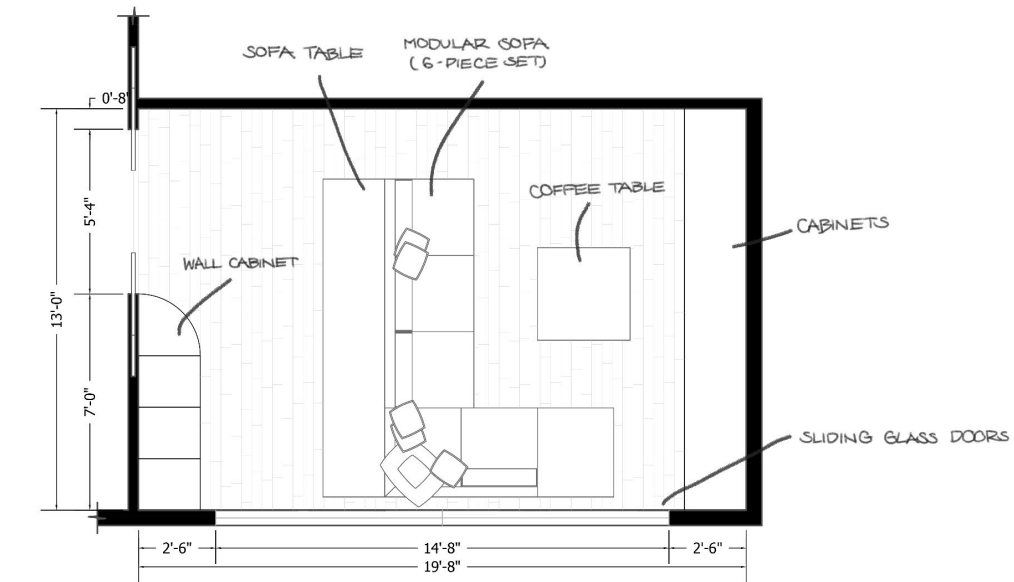




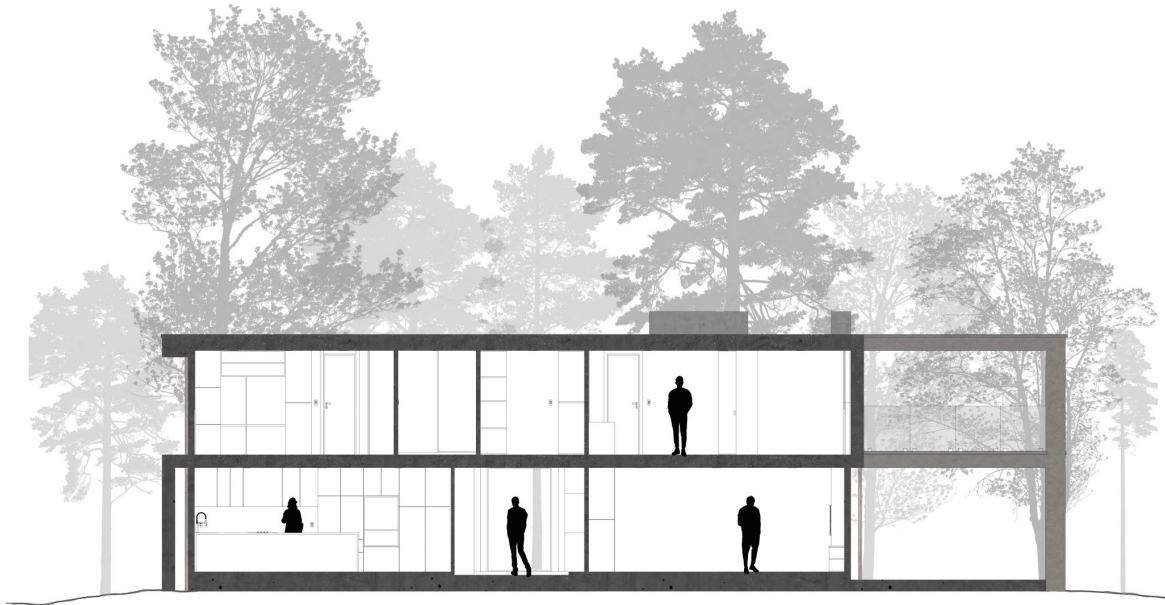
Kitchen Plan



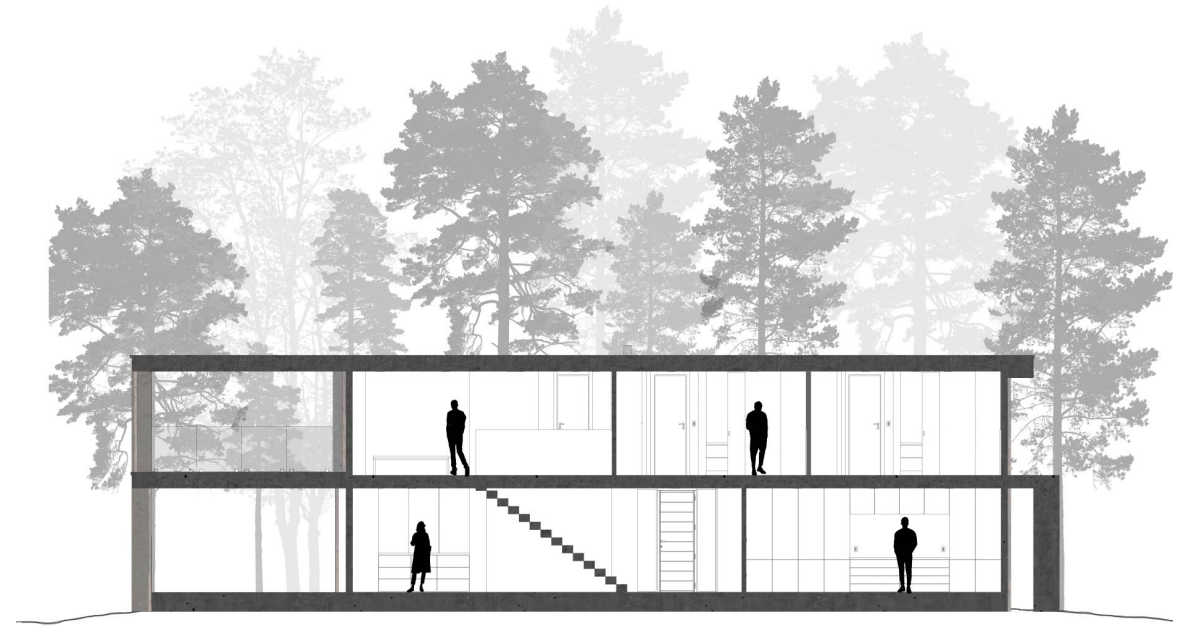
Living Room Plan







North Section



South Section



North Elevation



South Elevation







## 02 Hwa

Fall 2024, in collaboration with David Vi Boi Huynh

Hwa - meaning “flower” or “blossom” in Korean, symbolizes blossoming and growth.

Google’s innovative spirit, represented as a flower, alongside South Korea’s cultural flower, blossoms into a one-of-a-kind experience represented in a 4,800-square-foot event hall.

The space is carefully crafted to foster a deeper connection between the symbolic “flower” of Google’s innovation and South Korea’s rich cultural heritage, emphasizing three key elements: sustainability through mindful material choices and biophilic design, Google’s signature creativity through bold colors and dynamic shapes, and a celebration of Korean culture through meaningful symbolism.

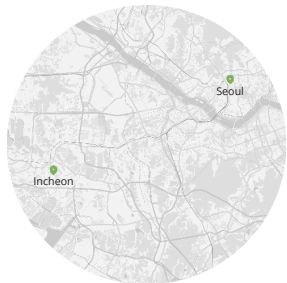
Together, these elements create an immersive experience that honors both cutting-edge technology and rich cultural traditions.



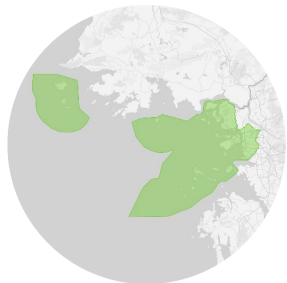




Map of South Korea



Map of Seoul



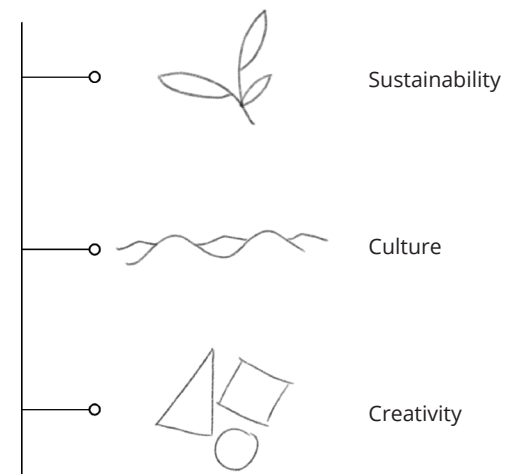
Map of Incheon

## Location

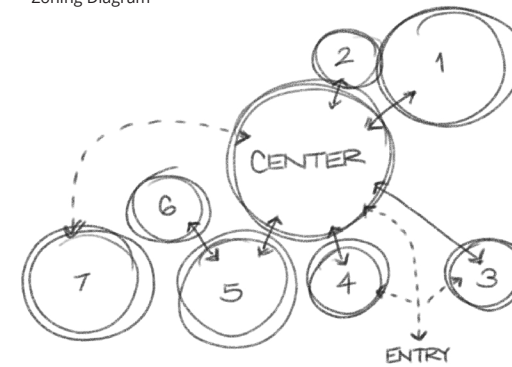
Incheon, South Korea, blends modern innovation with rich cultural heritage, making it the perfect setting for an event hall that fuses Google's playful design with Korean culture. Located in the thriving Songdo International Business District, the hall captures Incheon's forward-thinking spirit while honoring its vibrant traditions.

This dynamic space showcases Google's creativity through bold design, sustainability, and deep cultural symbolism, perfectly reflecting the city's role as a global tech and commerce hub.

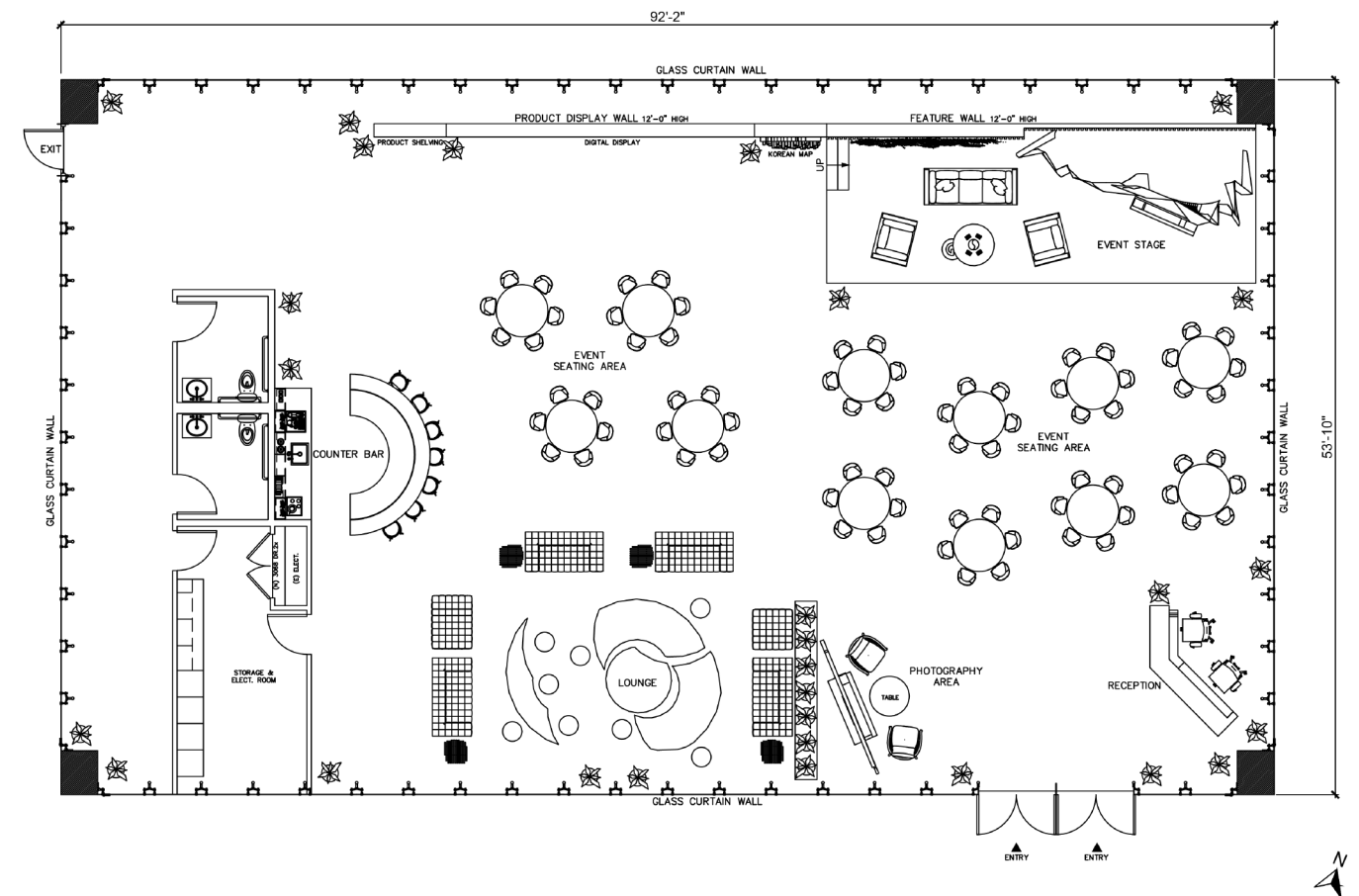
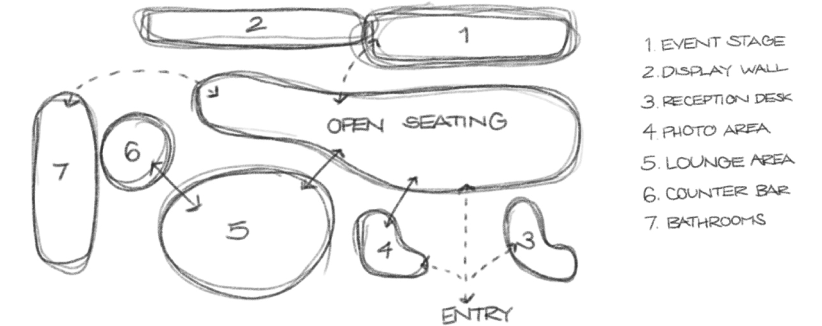
The design highlights three main ideas:



Zoning Diagram



Zoning Diagram Refined







### Ceiling Design

Korea's fast-paced "pali-pali" culture is reflected in the design through a kinetic ceiling that responds to movement. Spanning the entire ceiling, upcycled wood boards form a wave-like pattern, evoking a sense of motion when moving through the space.

### Event Stage

The event hall's design is anchored by a feature wall. Covered in EcoFaux plants, the wall features a large Google logo made of painted wood, clearly indicating the event's host.

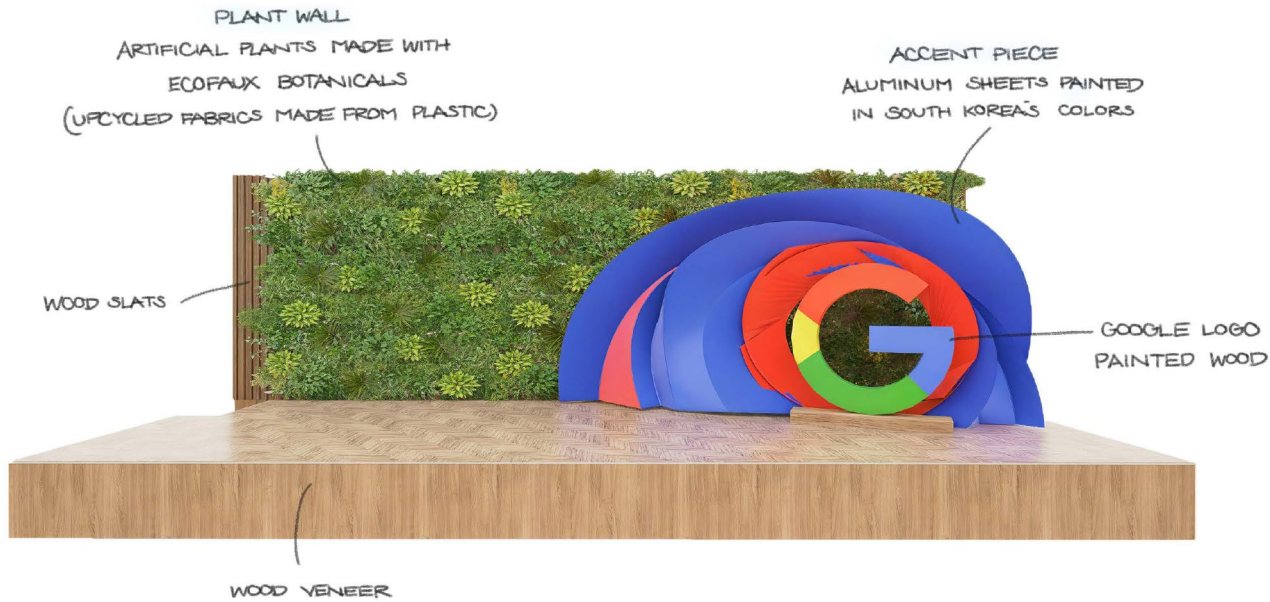
Behind the logo, an eye-catching aluminum accent piece, painted in South Korea's national colors, emphasizes the collaboration between Google and South Korea. This visually dynamic feature wall serves as a stunning backdrop for the stage.

### Display Wall

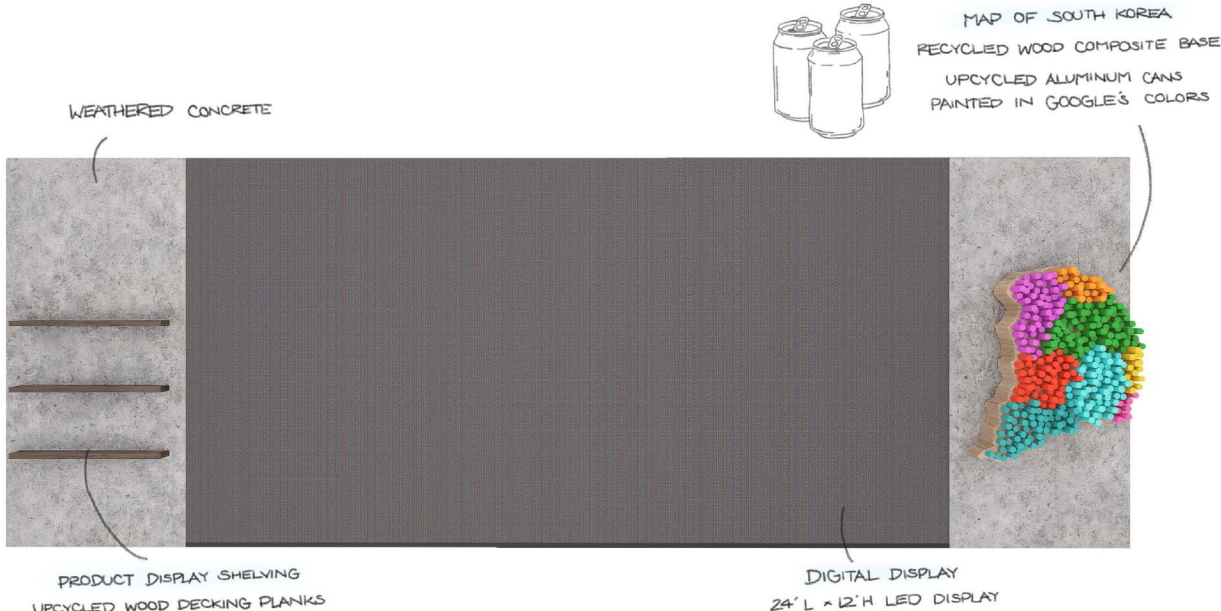
Adjacent to it, a 24-foot LED display showcases Google's products and promotions. On the right, a map of South Korea, made from upcycled aluminum cans and painted in Google's signature colors, celebrates the partnership between the two.

This piece highlights both Google's playful design aesthetic and South Korea's cultural heritage while symbolizing their shared commitment to sustainability.

Feature Wall



Display Wall







#### Photo Area

Social media is deeply embedded in South Korean culture, and to reflect this, a dedicated photo area is positioned to the left of the entrance. Featuring a prominent Google logo backdrop, the space is furnished with two Eames chairs and a coffee table, offering a stylish and professional setting perfect for capturing social media-worthy moments.



#### Lounge

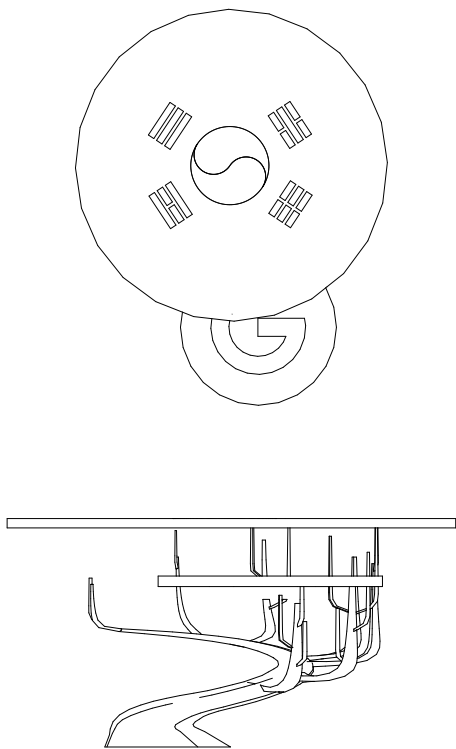
A space for guests to relax while awaiting events, this area features furniture in playful colors and unique geometric shapes, reflecting Google's design style. Large, circular ring lights hover overhead, providing a warm, inviting glow to the space.

#### Counter Bar

Light refreshments are offered to guests, featuring a fusion of Korean and American flavors to highlight the theme of collaboration.



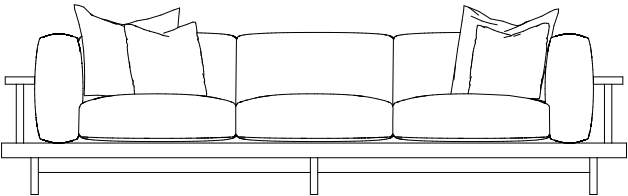
Custom Furniture



Event Stage Table

This table features a simple two-tiered circular design made from wood. The top tier is etched with the Korean flag, reflecting cultural pride, while the bottom tier displays Google's logo, symbolizing innovation.

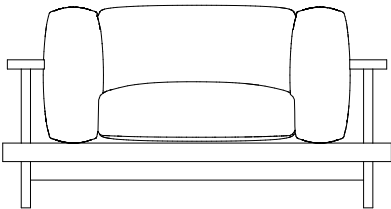
The base, made from a twisted tree branch, represents Google's growth and connection to the Korean market. The design combines both traditional and modern elements.



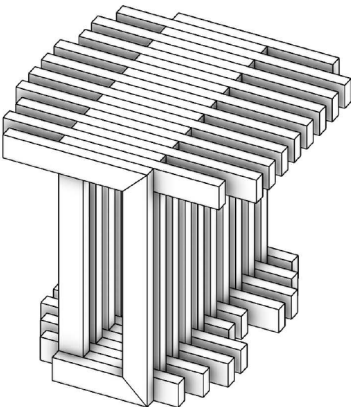
Event Stage Sofa

These stylish sofas feature a sleek wooden base supported by sturdy slats, with modern aluminum cylinder armrests.

Soft green cushions provide comfort and a serene ambiance, while the eco-friendly design uses recycled materials, blending sustainability with beauty.



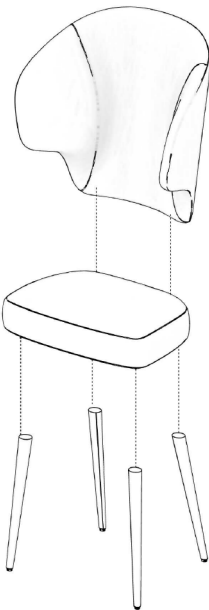
Custom Furniture Designed By David Vi Boi Huynh



Lounge Side Table

The Google Chrome Side Table reinterprets the Google logo with a geometric design of alternating C-shaped panels, resembling Lego bricks. Available in three versions—lightweight aluminum, natural oak, and oak painted in Google's primary colors—the table's varying panel sizes create a dynamic, wave-like effect.

This functional side table doubles as a sculptural piece, perfect for sitting areas and pairing with sofas for events. Its modern design and practicality align with Google's ethos of blending innovation and accessibility.



Event Seating Chairs

The Google Vibrant Chair is inspired by the playful shape and colors of the Google logo, featuring six bold hues. Its flowing silhouette is paired with a supportive backrest and a solid oak frame, finished with durable hard-wax oil for elegance and sturdiness.

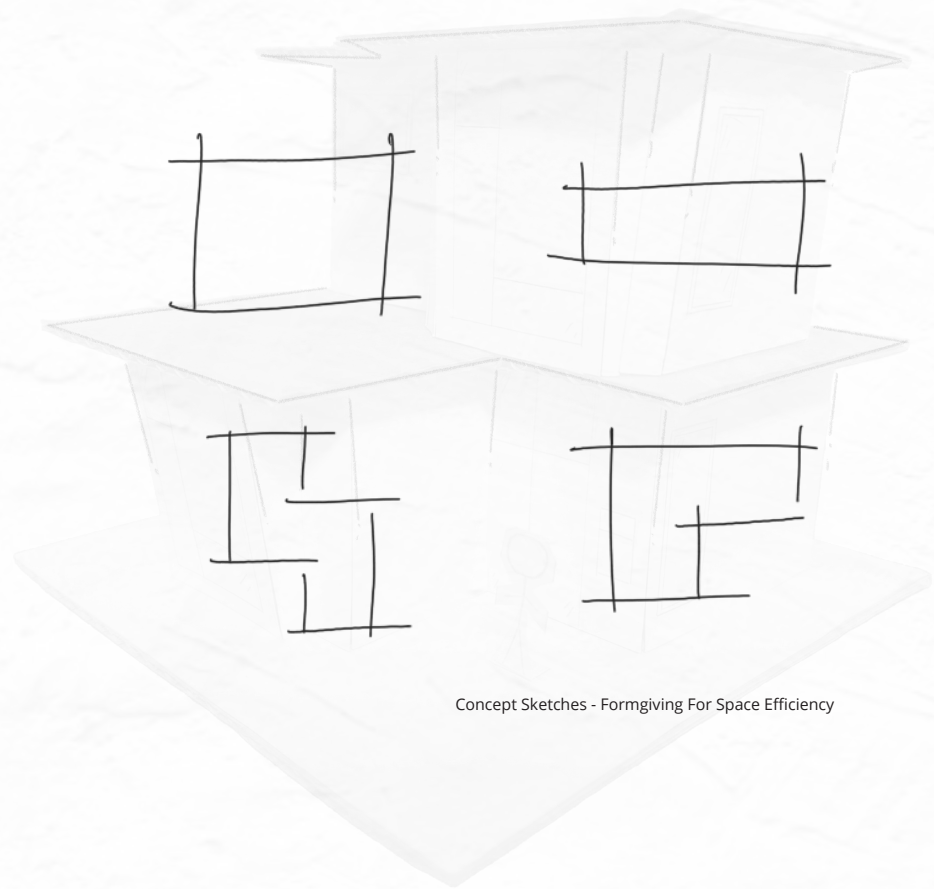
The seat is wrapped in premium, easy-to-maintain aniline-dyed Italian leather. Ergonomically designed for comfort, it's a vibrant, functional centerpiece for any Google event, inviting guests to relax and enjoy the experience.











Concept Sketches - Formgiving For Space Efficiency

## 03 Mizu

Spring 2024

Mizu - meaning “water” in Japanese, symbolizes purity, fluidity, and sustainability. It reflects a deep connection to nature and balance, evoking serenity and mindfulness.

This project embraces these principles, transforming a compact 380-square-foot layout into a practical and functional space. With sustainability at its core, the design aims to achieve a net-zero energy home, ensuring a harmonious relationship between the built environment and the natural world.

### Location

Osaka is one of Japan's major cities, known for its vibrant culture, rich history, and modern attractions. Located on the western side of Japan's Honshu Island, Osaka is a bustling metropolis that blends tradition with innovation.

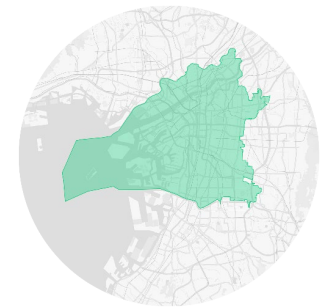
Osaka experiences a humid subtropical climate, characterized by hot summers and mild winters.



Map of Japan



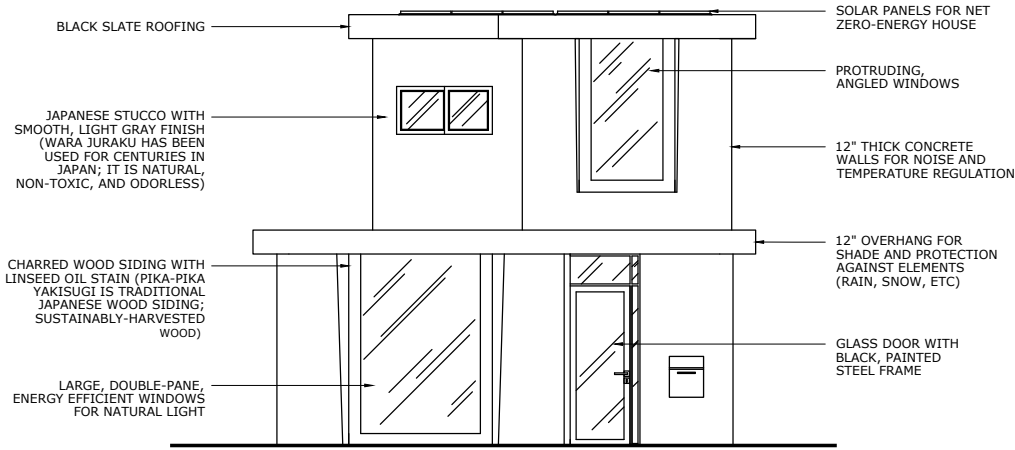
Map of Kyoto



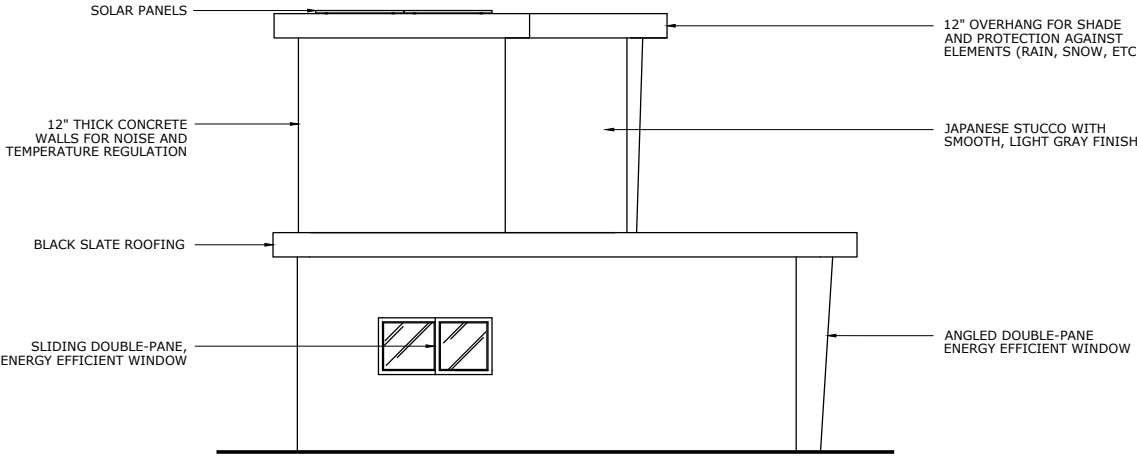
Map of Osaka



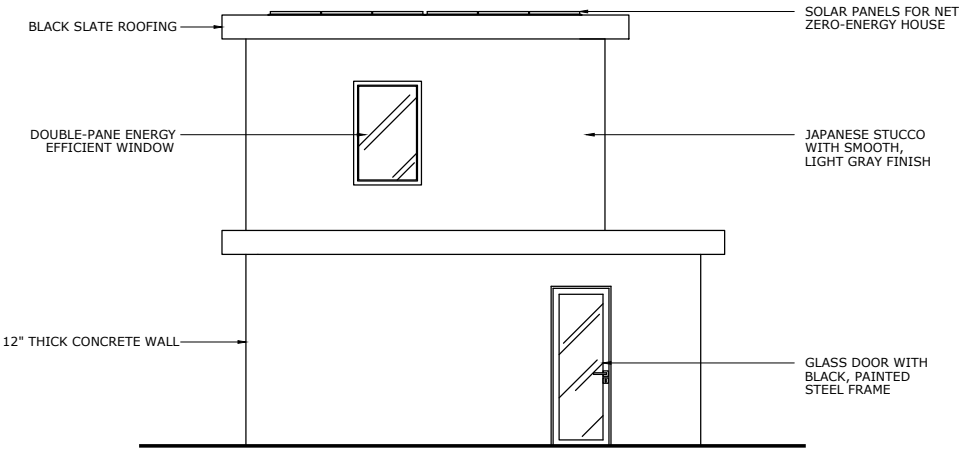
Elevations - materials chosen for cultural significance and sustainability



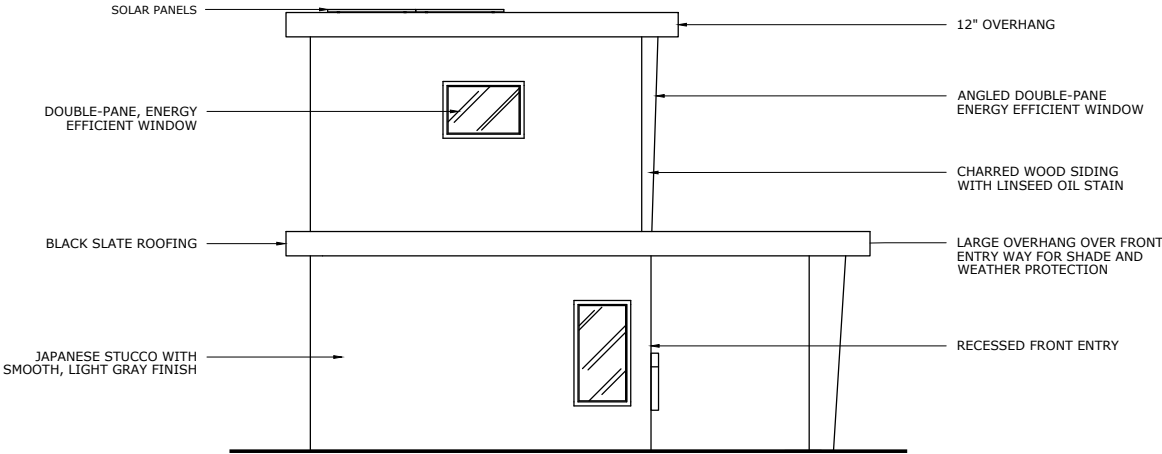
NORTH ELEVATION



WEST ELEVATION

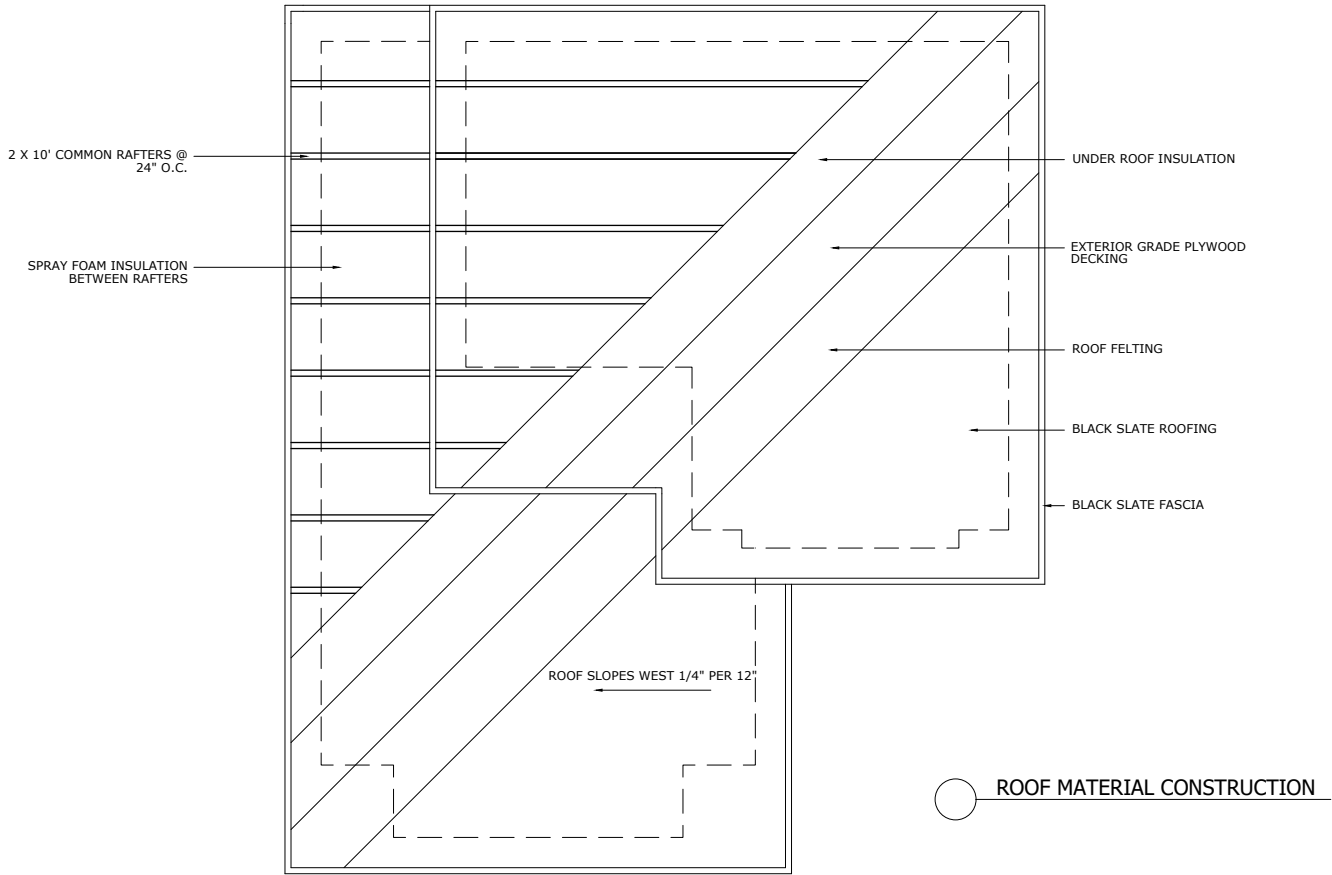


SOUTH ELEVATION

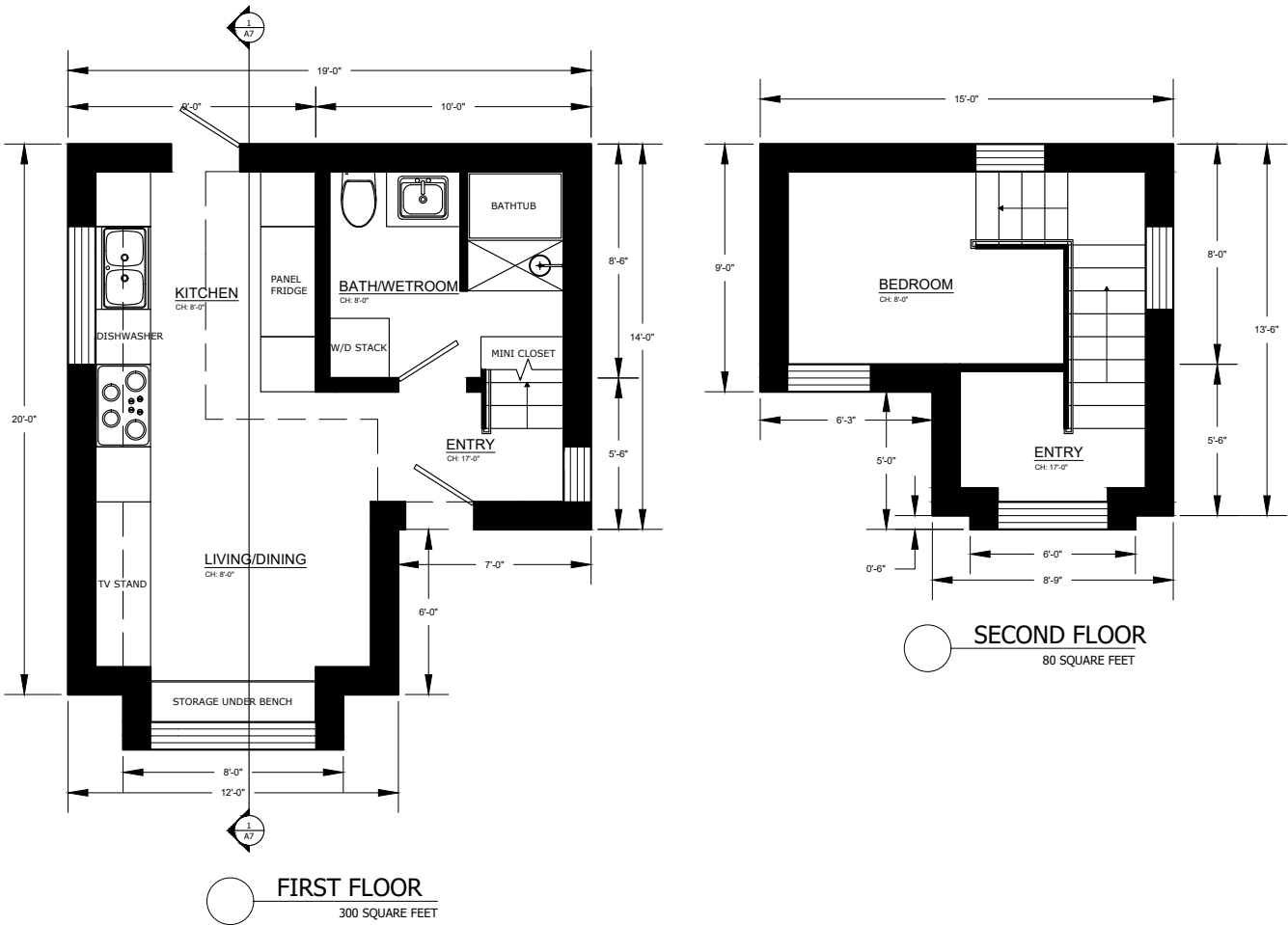


EAST ELEVATION

Roof Plan



Construction Plan





Finishes

| ROOM          | WALLS                   | FINISH                           | FLOORS             | FINISH            | CEILING            | FINISH                              |
|---------------|-------------------------|----------------------------------|--------------------|-------------------|--------------------|-------------------------------------|
| ENTRY         | SATORI JAPANESE PLASTER | LIGHT BEIGE, LOW SHEEN, TEXTURED | NARA OAK HARD WOOD | NATURAL           | PAINT OVER DRYWALL | BENJAMIN MOORE "SIMPLY WHITE" SATIN |
| LIVING ROOM   | SATORI JAPANESE PLASTER | LIGHT BEIGE, LOW SHEEN, TEXTURED | NARA OAK HARD WOOD | NATURAL           | PAINT OVER DRYWALL | BENJAMIN MOORE "SIMPLY WHITE" SATIN |
| KITCHEN       | SATORI JAPANESE PLASTER | LIGHT BEIGE, LOW SHEEN, TEXTURED | NARA OAK HARD WOOD | NATURAL           | PAINT OVER DRYWALL | BENJAMIN MOORE "SIMPLY WHITE" SATIN |
| BATH/WET ROOM | SLATE TILE              | DARK GREY, MATTE, TEXTURED       | SLATE TILE         | LIGHT GREY, MATTE | PAINT OVER DRYWALL | BENJAMIN MOORE "SIMPLY WHITE" SATIN |
| BEDROOM       | SATORI JAPANESE PLASTER | LIGHT BEIGE, LOW SHEEN, TEXTURED | NARA OAK HARD WOOD | NATURAL           | PAINT OVER DRYWALL | BENJAMIN MOORE "SIMPLY WHITE" SATIN |

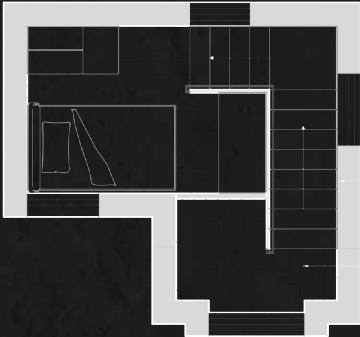
\*RECYCLED MATERIALS USED WHEN AVAILABLE



FIRST FLOOR  
300 SQUARE FEET

SLATE TILE:  
DARK GREY,  
MATTE,  
TEXTURED

SLATE TILE:  
LIGHT GREY,  
MATTE,  
TEXTURED

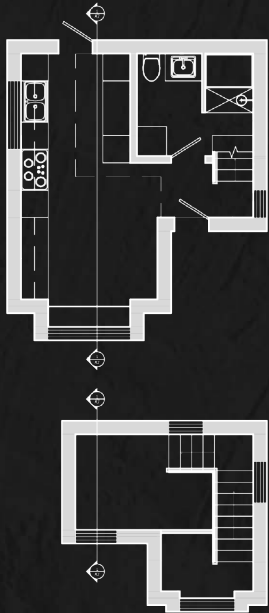


SECOND FLOOR  
80 SQUARE FEET

SATORI JAPANESE  
PLASTER:  
LIGHT BEIGE,  
LOW SHEEN,  
TEXTURED

NARA OAK HARD  
WOOD:  
NATURAL FINISH,  
NO STAIN

Longitudinal Section

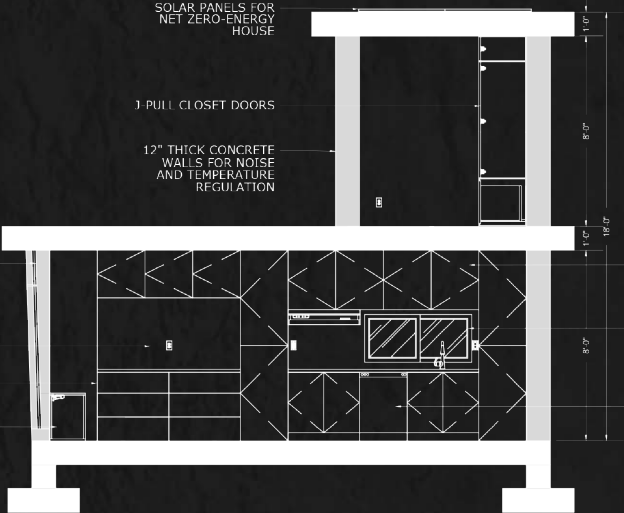


1 LARGE,  
DOUBLE PANE,  
ENERGY EFFICIENT  
WINDOWS FOR  
NATURAL LIGHT

AREA FOR TV/DISPLAY

J-PULL DRAWERS  
FOLLOW MINIMALIST  
JAPAN DESIGNS

UNDER CABINET  
STORAGE



PUSH TO OPEN  
CABINETS FOLLOW  
MINIMALIST JAPAN  
DESIGNS

DOUBLE PANE SLIDING  
WINDOW FOR  
VENTILATION AND  
NATURAL LIGHT

ENERGY EFFICIENT  
DISH WASHER