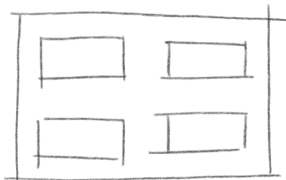
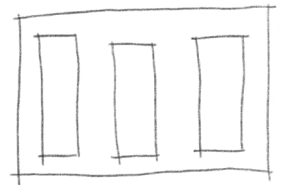
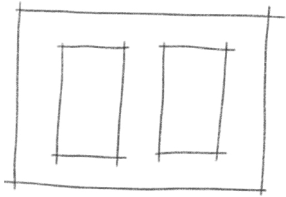
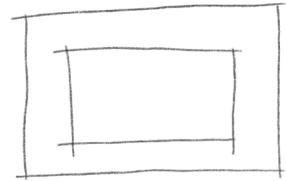


SAMSUNG

San Leandro Innovation Branch



A Study Of Interior Circulation

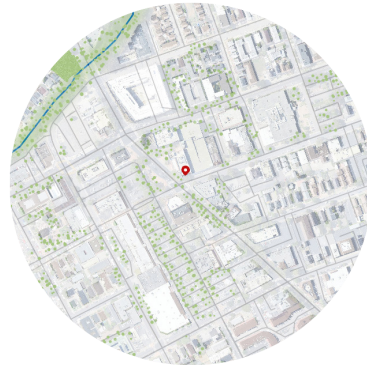
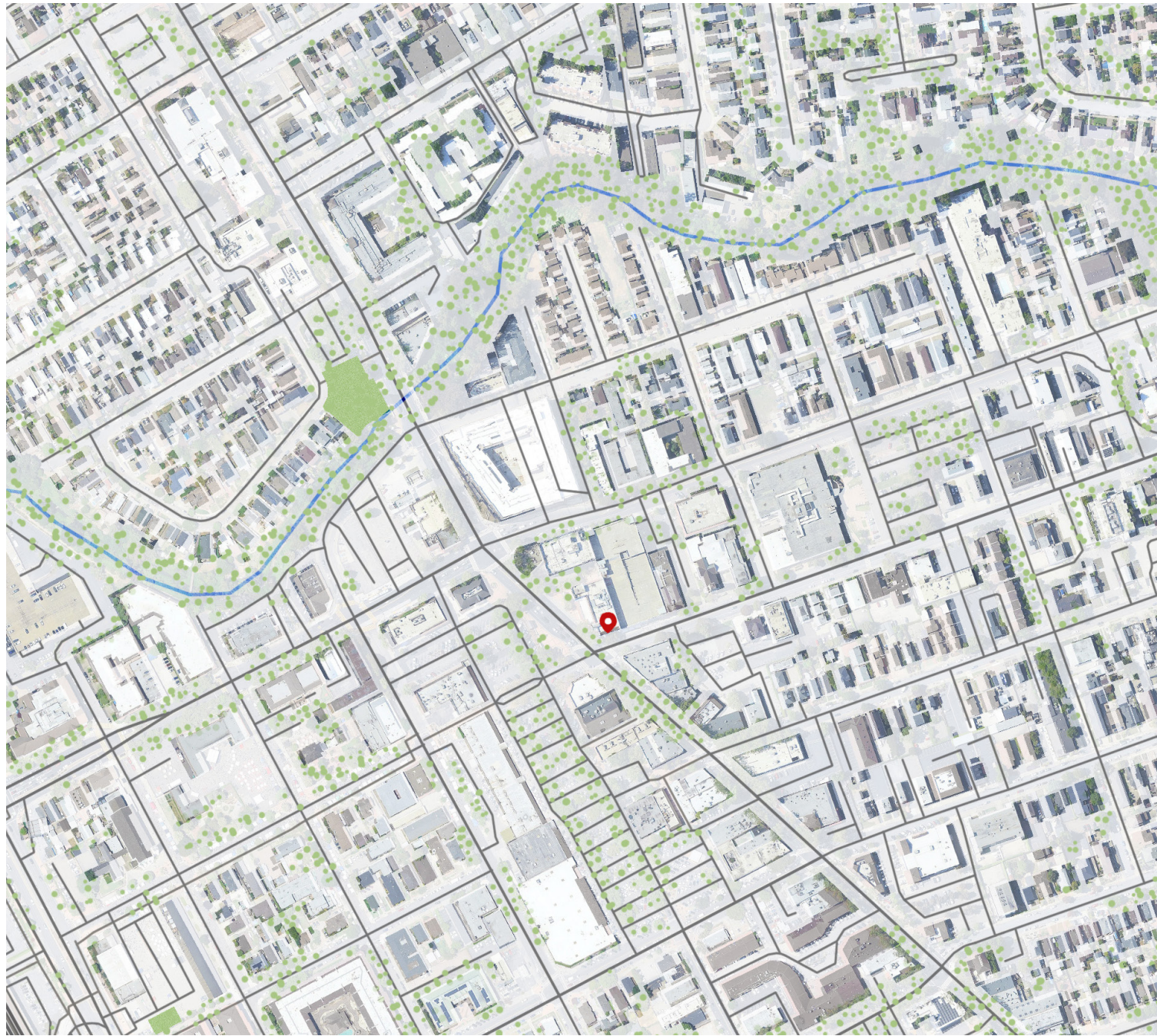
San Leandro Innovation Branch

This Samsung office redefines the modern workspace by seamlessly integrating cutting-edge technology, sustainable practices, and adaptive design. Embracing Samsung's core identity as an innovation leader, the space features expansive Samsung-branded displays and immersive RGB lighting that adapts to mood and function—visually communicating the dynamic energy of the brand. A flexible office layout is made possible through modular furniture systems, enabling effortless reconfiguration to support collaboration or focused work.

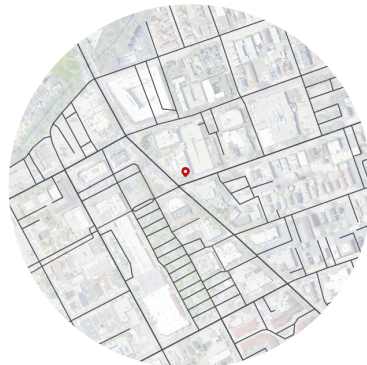
At the core of the office environment is a commitment to sustainability. Carefully selected remanufactured and Steelcase furniture contribute to LEED certification goals, while solar panels reduce energy dependency and promote a greener footprint. Upcycled materials, creatively repurposed from Samsung's own product byproducts, are embedded throughout the space—creating a tactile connection to the brand's lifecycle and environmental values.

This office is not just a workplace—it's a living showcase of Samsung's dedication to innovation, adaptability, and sustainability.

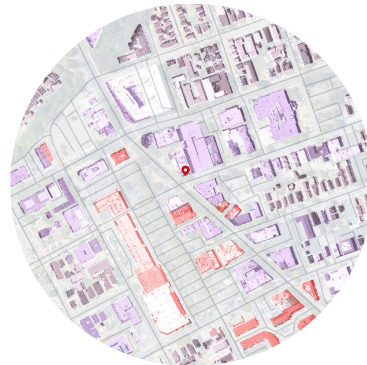




Nature



Roads



Buildings

Location

The proposed Samsung Office site in San Leandro offers a balanced blend of natural surroundings, robust transit access, urban amenities, and cultural richness.

Nature & Green Space: Proximity to San Leandro Creek, the City Park, and tree-lined streets enhances the workplace with natural beauty and supports wellness-focused design.

Transportation Access: The site is well-connected via the San Leandro BART Station (with bike parking), multiple nearby bus stops, and EV infrastructure (Electrify America Charging Station). Free city parking and nearby gas stations (Chevron, Valero) support all commuting options.

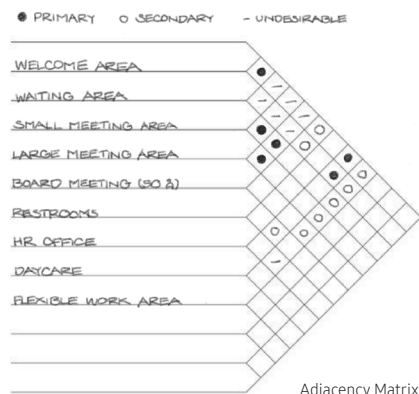
Amenities & Services: A wide variety of restaurants (e.g., IHOP, 85°C Bakery, Peet's Coffee), banks (Wells Fargo, BofA, Fremont Bank), and retail stores (Safeway, CVS, UPS) are within walking distance—offering everyday convenience for employees.

Landmarks & Culture: Historic sites like the San Leandro Plaza Display, History Museum, and Casa Peralta add cultural depth and local identity to the surrounding environment.

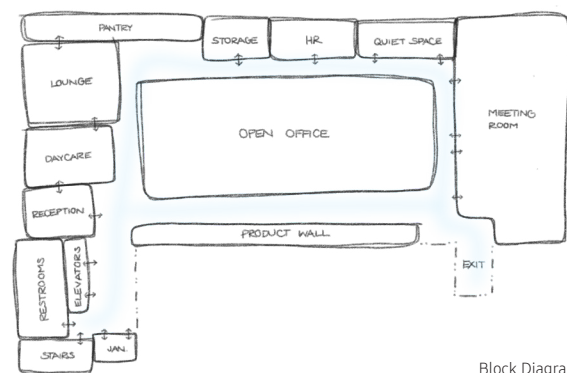
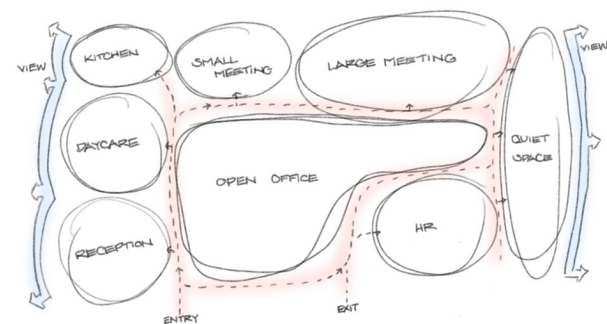
Cirulation and Accessibility

The design emphasizes the relationship between different spaces, prioritizing ease of movement throughout. Accessibility is a key focus, with most walkways exceeding ADA standards at over 5 feet wide. The floorplan is divided into two primary zones: the open office and the lounge areas.

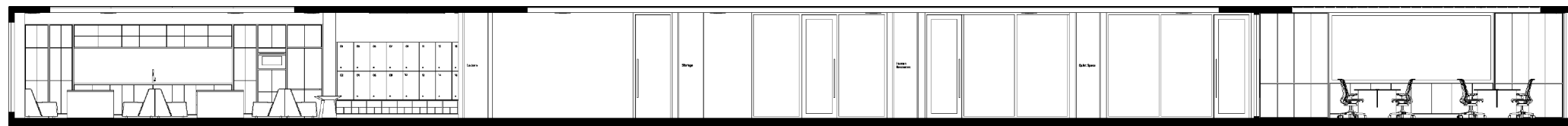
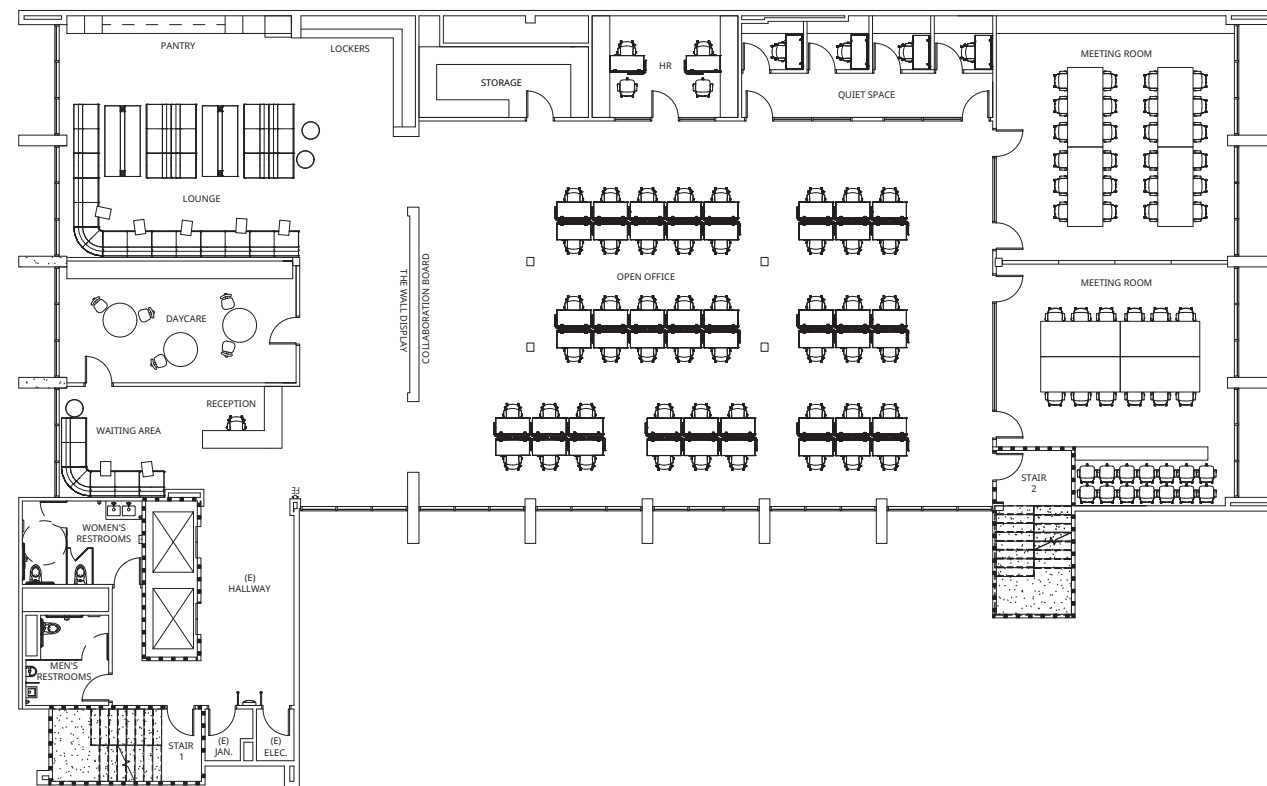
To the left of the floorplan are the reception area, daycare, and a lounge with lockers—spaces typically used at the beginning, middle, and end of a shift. The open office zone includes office supply storage, an HR office, a quiet space, and a modular meeting room. This cluster is intentionally arranged to ensure employees can access work-related resources efficiently and with minimal effort.



Adjacency Matrix

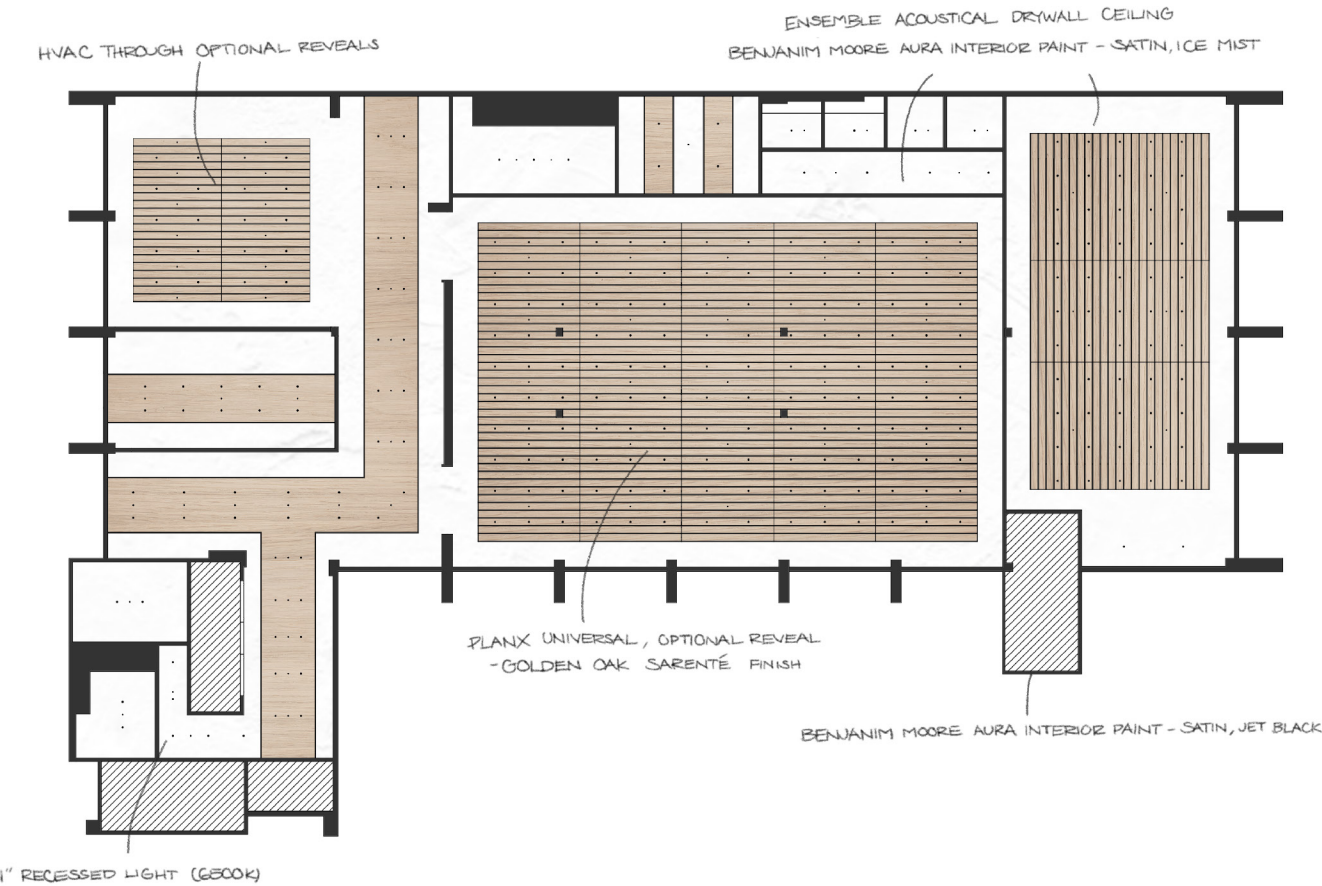
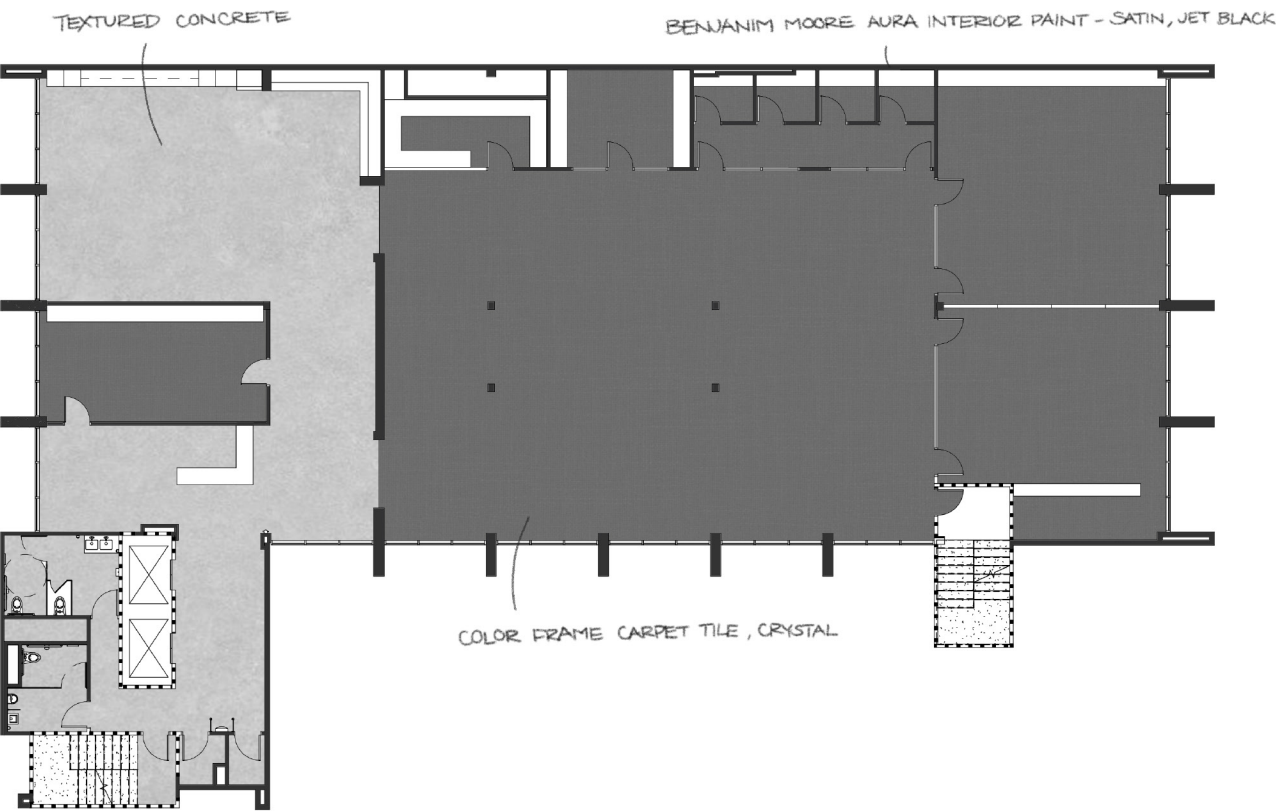


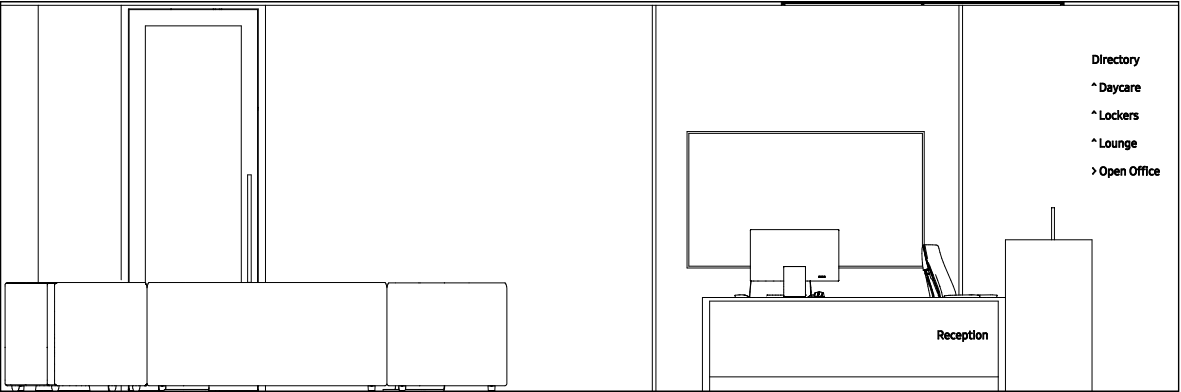
Block Diagrams



East Section

Finishes





Reception

As you exit the elevator, you're greeted by a sign for Samsung's San Leandro Innovation Branch and a 75" The Frame TV showcasing company videos. To the left, an ADA-accessible reception desk sits beside a waiting area furnished with Steelcase's Campfire lounge pieces.

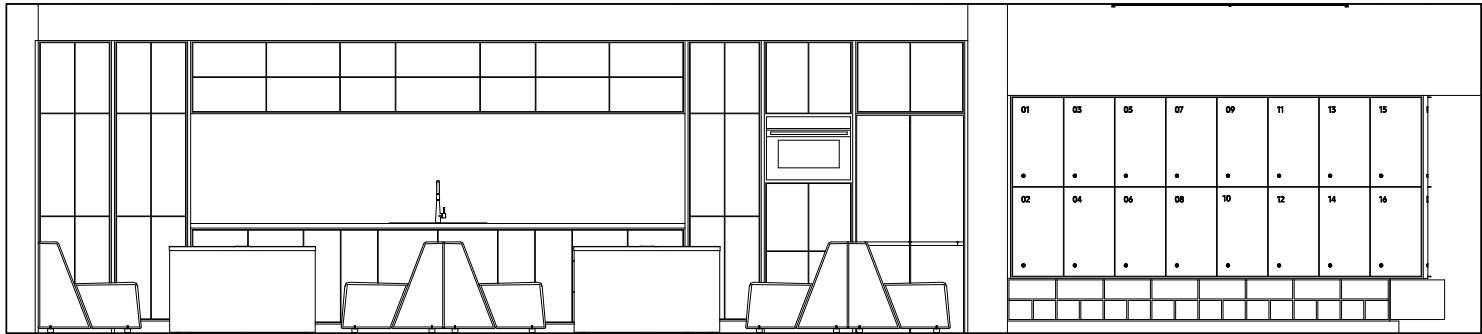
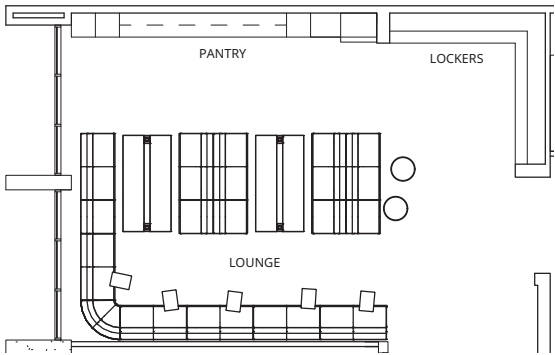
Just beyond is an on-site daycare, conveniently located for easy drop-off and pickup. Designed to support employees with young children, it's staffed by qualified caregivers and provides a safe, nurturing environment. Positioned away from the open office to reduce noise, it also allows parents to easily check in or visit during breaks.



Lounge

The employee lounge features comfortable seating from Steelcase's Campfire line, creating a welcoming space for relaxation as well as informal meetings with colleagues or clients. The area includes a spacious pantry equipped with a sink, a Bespoke 29 cu. ft. 4-Door Flex™ Refrigerator with Beverage Center™ and customizable white glass panels, as well as a Bespoke 2.1 cu. ft. Over-the-Range Microwave featuring auto-dimming glass touch controls, along with ample cabinetry to store snacks, beverages, and other employee refreshments.

To support a clean, minimalist desk setup, lockers and storage cubbies are provided for personal belongings, ensuring employees have convenient and secure storage without the need for built-in desk drawers.



Inspire The World

SAMSUNG

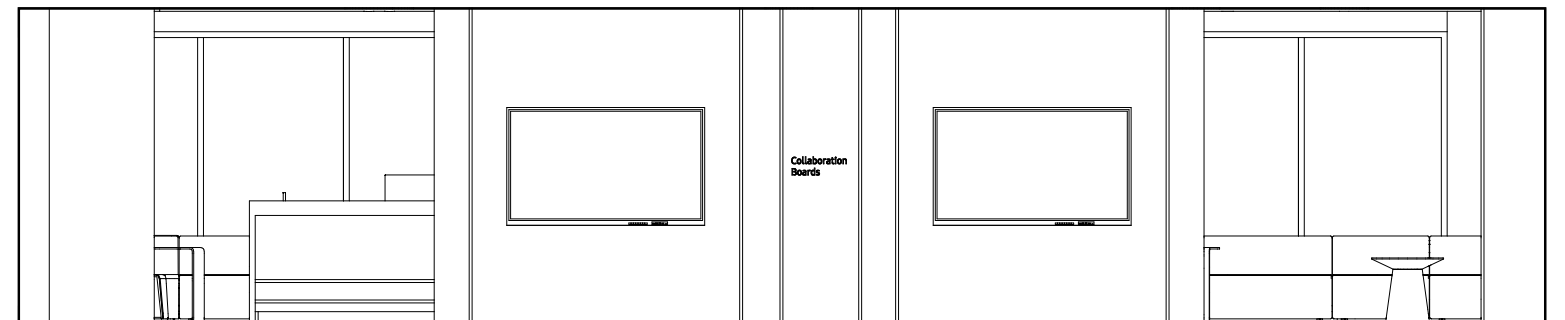


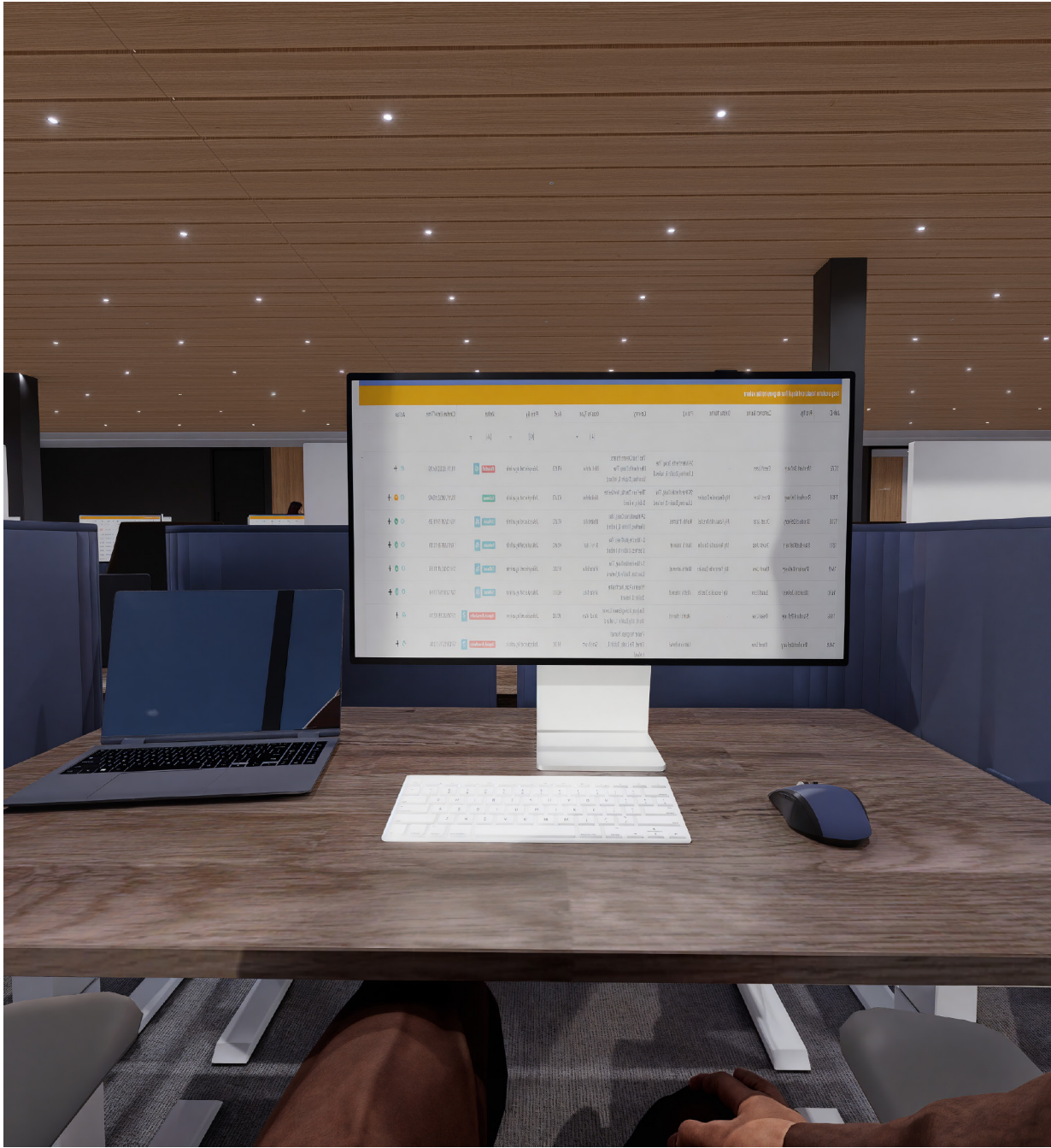


Feature Wall

Just beyond the reception desk stands a striking 20-foot-wide installation of The Wall, showcasing Samsung's cutting-edge innovation in large-scale, modular display technology. This impressive screen plays promotional content, drawing attention to the brand's capabilities.

Behind The Wall, employees in the open office area have access to collaboration boards featuring Samsung's Interactive Pro 65" 4K UHD Interactive Display, designed to foster creativity and enhance teamwork.





Open Office

The open office space is thoughtfully designed for modularity and supports up to 50 employees. Each workstation is outfitted with a 27” ViewFinity S9 monitor, a Samsung Bluetooth keyboard and mouse, and a Galaxy Book4 Ultra laptop powered by an NVIDIA RTX 4070 GPU—ensuring smooth performance for demanding workflows.

To promote comfort and sustainability, all office chairs are remanufactured Steelcase models provided by Crandall Office. These ergonomic chairs—available in Amia, Leap, and Gesture styles—come with a 12-year warranty and contribute toward LEED certification. Employees also have the flexibility to choose their preferred fabric color, adding a personalized touch to their workspace.

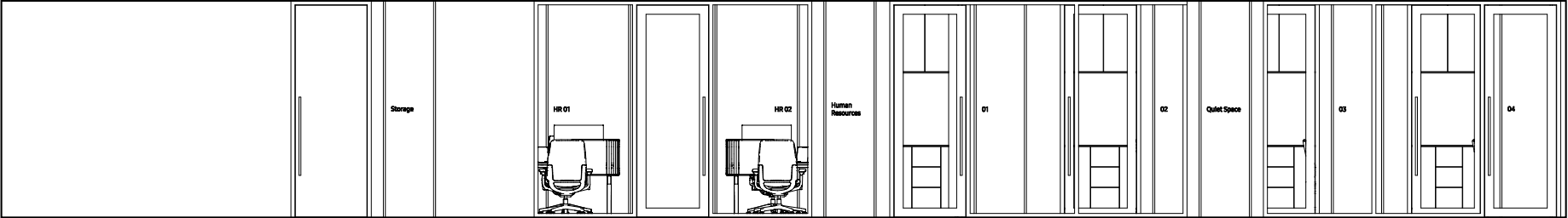






Office

Within the open office layout, there's a dedicated storage room for all office supplies. Adjacent to it is the HR office, designed to accommodate two employees, featuring ample storage along with space for printers and scanners. Next to the HR office is a quiet area intended for employees who need a more peaceful environment. This section includes four spacious, private rooms—each equipped with a desk, a printer, and storage for any necessary office supplies.



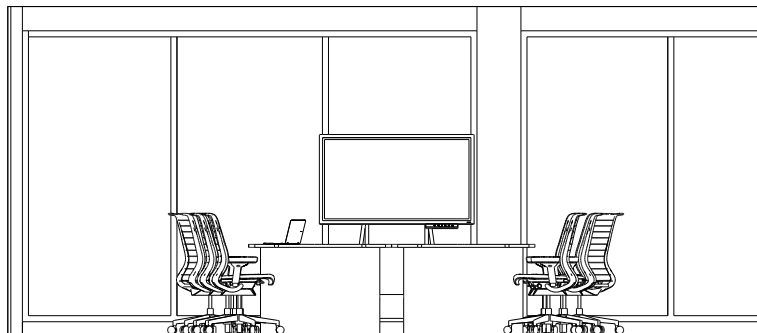
Meeting Room

All meeting rooms are furnished exclusively with Steelcase Think chairs, featuring mesh backs, black frames, and matching black fabric—creating a cohesive, professional look across all collaborative spaces.

Each room is equipped with a Samsung Interactive Pro 65" 4K UHD Interactive Display on wheels, ideal for dynamic collaboration. The meeting room on the left also boasts a striking 14-foot The Wall display for high-impact presentations.

Thoughtful amenities include built-in storage for meeting supplies and a concealed coffee bar within the cabinetry of each room, offering convenient refreshments during meetings.

For larger gatherings, a movable center partition wall can be moved outside the room and seamlessly merge both meeting rooms into a single expansive space, accommodating up to 50 attendees.





Galaxy AI is here



The Art Of Expression

Galaxy AI is here

